

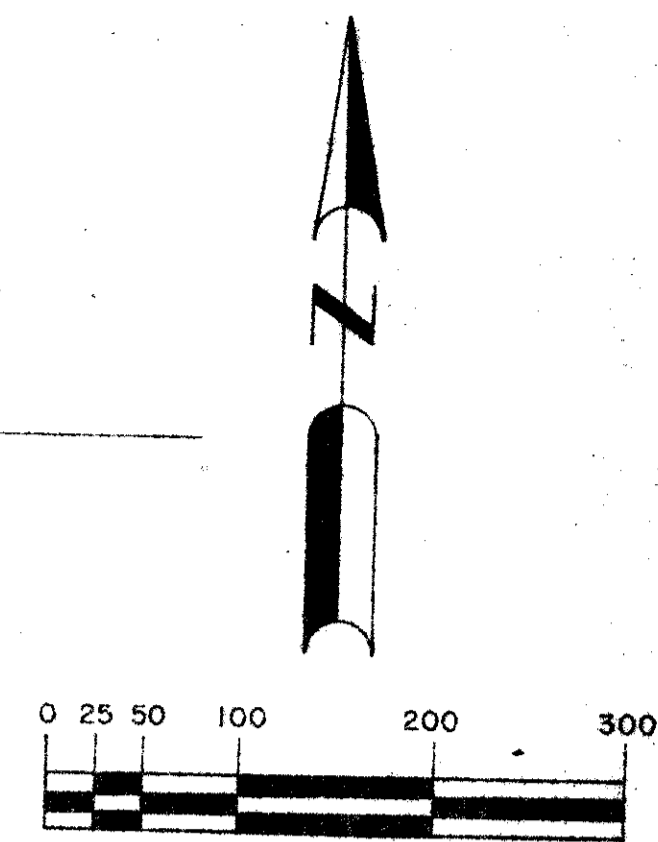
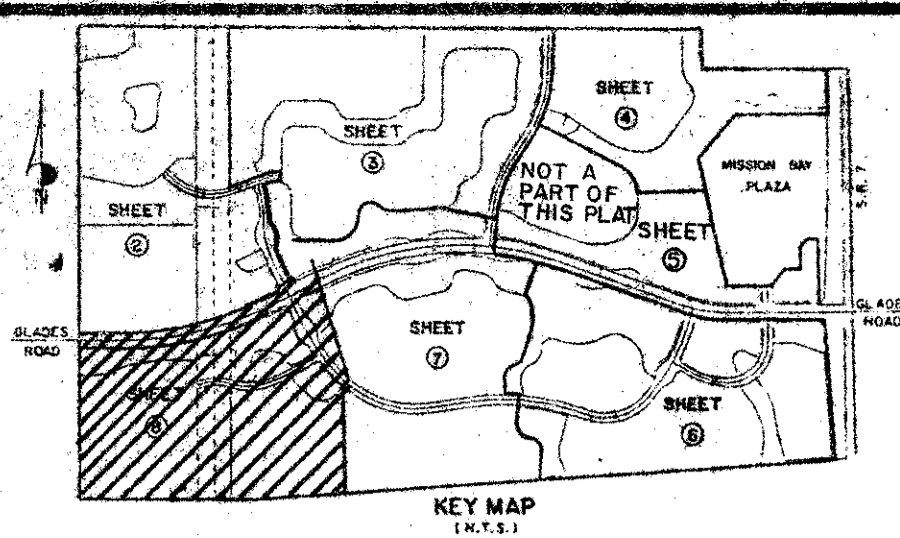
DRAWING NUMBER
53/119

MISSION BAY

A P.U.D.

IN SECTIONS 13 & 14, TOWNSHIP 47 SOUTH, RANGE 41 EAST, PALM BEACH COUNTY, FLORIDA. BEING A PORTION OF THE EAST 1/4 OF SECTION 14 AND A REPLAT OF A PORTION OF TRACTS 7, 8, 9, 10, 23, 24, 33, 34, 40, 41, 49, 50, 51, 55, 56, 57, 63, 64, AND ALL OF TRACTS 6, 11, 12, 21, 22, 25-28, 35-39, 42-48, 52-54 & 58-62 INCLUSIVE OF THE PLAT OF FLORIDA FRUIT LANDS COMPANY'S SUBDIVISION NO. 2 OF SECTION 13-47-41, AS RECORDED IN PLAT BOOK 1, PAGE 102, PALM BEACH COUNTY, FLORIDA.

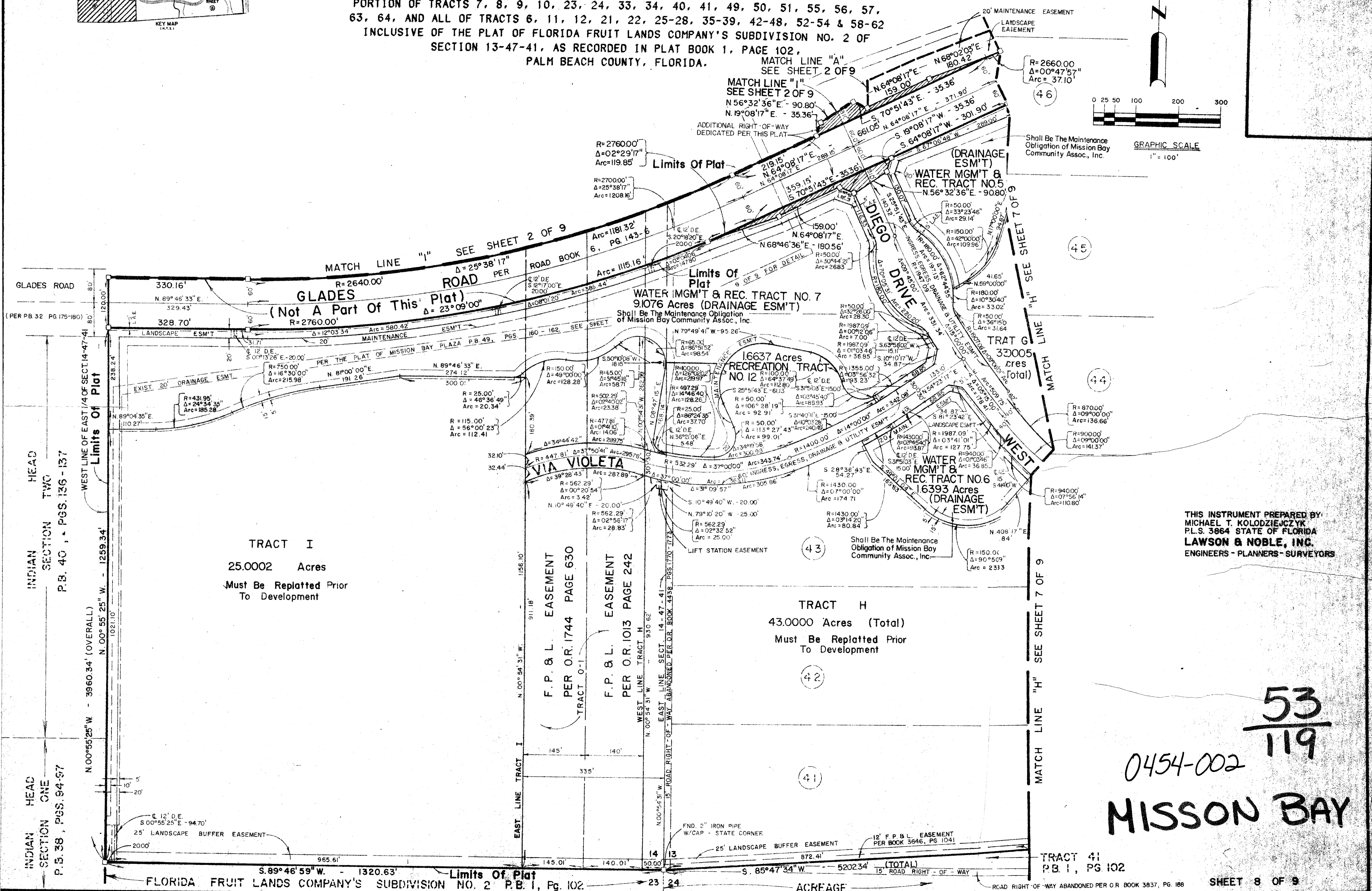
119



DRAWING NUMBER
PLAN-HOLD CORPORATION - IRVINE, CALIFORNIA
REGISTERED NUMBER 07548

DRAWING NUMBER
PLAN-HOLD CORPORATION - IRVINE, CALIFORNIA
REGISTERED NUMBER 07548

DRAWING NUMBER
PLAN-HOLD CORPORATION - IRVINE, CALIFORNIA
REGISTERED NUMBER 07548



THIS INSTRUMENT PREPARED BY:
MICHAEL T. KOLODZIEJCZYK
P.L.S. 3864 STATE OF FLORIDA
LAWSON & NOBLE, INC.
ENGINEERS - PLANNERS - SURVEYORS

0454-002
53/119
MISSION BAY

TRACT 41
P.B. 1, PG. 102
SHEET 8 OF 9

FLORIDA FRUIT LANDS COMPANY'S SUBDIVISION NO. 2 P.B. 1, PG. 102
ACREAGE
ROAD RIGHT-OF-WAY ABANDONED PER O.R. BOOK 3837, PG. 188